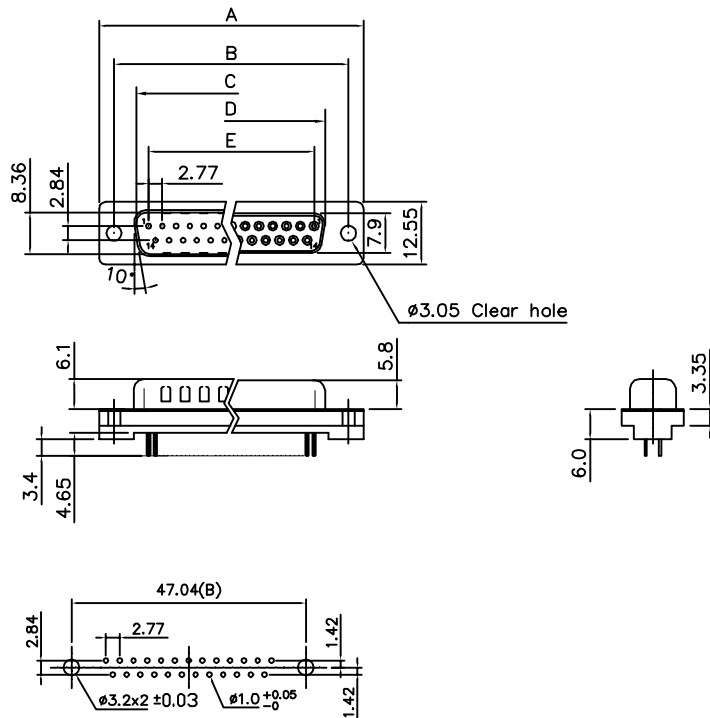


THE INFORMATION CONTAINED IN THIS DOCUMENT IS PROPRIETARY TO Y-S ELECTRONIC. ANY REPRODUCTION IN PART OR WHOLE WITHOUT PRIOR WRITTEN APPROVAL OR AUTHORIZATION OF Y-S ELECTRONIC IS STRICTLY PROHIBITED.

RoHS COMPLIANT

REVISIONS				
REV	ECN NO.	DESCRIPTION	APPROVED BY	DATE
A				



Recommended PCB Layout

Dimensions

Positions	A	B	C	D	E
9	30.81	24.99	16.92	16.33	11.08
15	39.20	33.30	25.25	24.70	19.39
25	53.05	47.04	38.96	38.40	33.24
37	69.40	63.50	55.42	54.80	49.86

Product Specification

Material

Insulator :Glass-Filled Thermoplastic PBT,UL94V-0 rated  
 Contact :Brass  
 Shell : Steel, 100u" Tin Over 50u" min Copper  
 Clinch Nut: Brass, 100u" min Nickel Plated.  
 Boardlock :Brass, 100u" min Tin Plated.  
 Screwlock :Brass, 100u" min Nickel Plated.

Electrical

Contact Resistance :20 milliohms  
 Max at 1 AMP DC.  
 Insulation Resistance :1000  
 megohms at 500 VDC  
 Dielectric Withstanding Voltage :  
 1000 VAC/rms 60Hz for 1 minute  
 Current Rating :3 AMP  
 Volatge Rating :250 VAC/rms 60Hz

DO NOT SCALE DRAWING

DIMENSIONS: <input type="checkbox"/> MM [INCH] <input type="checkbox"/> INCH [mm] <input checked="" type="checkbox"/> MM ONLY	CAD GENERATED DRAWING, DO NOT MANUALLY UPDATE DRAWN BY AND DATE JUSTIN XING 05-26-06	<p><b>Y-S ELECTRONIC CO., LTD.</b>          No. 101, Sec. 1, Long-An Street,          Lu-Chu, Taoyuan, Taiwan, R.O.C.          TEL: +886-3-3609819 FAX: +886-3-3609817</p>
UNLESS OTHERWISE SPECIFIED, GENERAL TOLERANCE: DECIMALS ANGLES X: ±0.38 [0.015] X°: ±3° .X: ±0.25 [0.010] .X°: ±1.0° .XX: ±0.13 [0.005]	CHECKED BY AND DATE JUSTIN XING 05-26-06 APPROVED BY AND DATE KING CHIU 05-26-06 THIRD ANGLE PROJECTION 	
MATERIAL	SCALE: 1 : 1	TITLE <b>192 SERIES D-SUB STRAIGHT TYPE          W/O METAL REAR SHELL</b>
FINISH	SIZE: A3	
DRAWING NO. 192-XXXXXXXX		REV A
FILE NO.		SHEET 1 OF 3

THE INFORMATION CONTAINED IN THIS DOCUMENT IS PROPRIETARY TO Y-S ELECTRONIC. ANY REPRODUCTION IN PART OR WHOLE WITHOUT PRIOR WRITTEN APPROVAL OR AUTHORIZATION OF Y-S ELECTRONIC IS STRICTLY PROHIBITED.

**RoHS COMPLIANT**

Ordering Information

192 -  $\frac{XX}{a} \frac{X}{b} \frac{X}{c} \frac{X}{d} \frac{X}{e} \frac{X}{f} \frac{X}{g}$

REVISIONS				
REV	ECN NO.	DESCRIPTION	APPROVED BY	DATE

**a. No. Of Contacts:**

- 09: 09 positions
- 15: 15 positions
- 25: 25 positions
- 37: 37 positions

**b. Contact Type**

- 1: Male(3.4mm)    3: Male(3.7mm)
- 2: Female(3.4mm)    4: Female(3.7mm)

**c. Contact Plating**

- 0: Gold flash selective gold
- 1:15u" selective gold on contact
- 2:30u" selective gold on contact

**d.Shell plating :**

- 0.Cr<sup>+3</sup> yellow chrome
- 1.Nickel(standard)
- 2.Tin
- 3.Cr<sup>+6</sup> yellow chrome
- 4.Gold flash
- 5.Special tin
- 6.Tin tab shell,
- 7.Tin , ul logo

**e.Insulator Color**

- 1:Black
- 2:Black(high temperature)

**f.Rivetting Options :**

- 0.∅3.05mm clear hole
- 1.Nut rivet:4.5\*2.9\*6.0mm
- 2.Standoff+2 prong boardlock∅3.2
- 3.Standoff+2 prong boardlock∅3.0
- 4.Standoff+2 prong boardlock∅3.1

5.Front rivet six nut,6.0mm

6.Standoff+4 prong boardlock∅3.15(quadrangle)

7.Standoff+2 prong boardlock∅3.15(quadrangle)

8.Front rivet round nut,6.9mm

9.Front rivet round nut,6.5mm


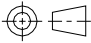
A.Standoff+4 prong boardlock∅3.25(quadrangle)

B.Standoff+4 prong boardlock∅3.20(hexagon)

**g.Flange Mounting Option :**

- 0:∅3.05mm clear hole
- 1:#4-40 threaded hole
- 2:#4-40 threaded hole with #4-40 unc(6.4\*10.5mm)screwlock installed
- 3:#4-40 threaded hole with #4-40 unc(6.4\*10.5mm)screwlock buld-packed
- 4:M3 threaded hole
- 5:#4-40 threaded hole with M3(6.4\*10.5mm)screwlock installed
- 6:#4-40 threaded hole with M3(6.4\*10.5mm)screwlock buld-packed
- 7:#4-40 threaded hole with M3(6.0\*10.1mm)screwlock installed
- 8:#4-40 threaded hole with #4-40 unc(5.0\*10.0mm) round "-" font screwlock installed
- 9:#4-40 threaded hole with #4-40 unc(5.8\*10.0mm)screwlock installed
- A:#4-40 threaded hole with #4-40 unc(5.8\*10.8mm)screwlock installed
- B:#4-40 threaded hole with #4-40 unc(5.0\*18.0mm)screwlock installed
- C:#4-40 threaded hole with #4-40 unc(6.0\*10.1mm)screwlock installed
- D:#4-40 threaded hole with M3(5.8\*10.0mm)screwlock installed
- E:#4-40 threaded hole with #4-40 unc(6.0\*10.1mm)single(anigh #1pin)screwlock installed
- F:#4-40 threaded hole with #4-40 unc(6.0\*10.1mm) round screwlock installed
- G:#4-40 threaded hole with #4-40 unc(5.0\*9.0mm)screwlock installed
- H:#4-40 threaded hole with M3(5.8\*10.0mm)screwlock buld-packed

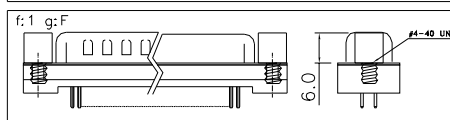
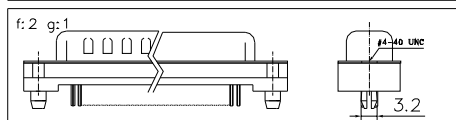
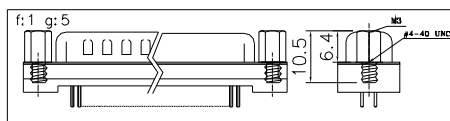
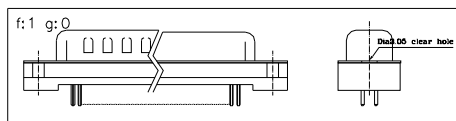
DO NOT SCALE DRAWING

DIMENSIONS: <input type="checkbox"/> MM [INCH] <input type="checkbox"/> INCH [mm] <input checked="" type="checkbox"/> MM ONLY		CAD GENERATED DRAWING, DO NOT MANUALLY UPDATE DRAWN BY AND DATE JUSTIN XING 07-20-06		 <b>Y-S ELECTRONIC CO., LTD.</b> No. 101, Sec. 1, Long-An Street, Lu-Chu, Taoyuan, Taiwan, R.O.C. TEL: +886-3-3609819 FAX: +886-3-3609817
UNLESS OTHERWISE SPECIFIED, GENERAL TOLERANCE: DECIMALS    ANGLES X: ±0.38 [0.015]    X° ±3° .X ±0.25 [0.010]    .X° ±1.0° .XX ±0.13 [0.005]		CHECKED BY AND DATE JUSTIN XING 07-20-06 APPROVED BY AND DATE KING CHIU 07-20-06 THIRD ANGLE PROJECTION		
MATERIAL: _____ FINISH: _____				TITLE 192 SERIES D-SUB DIP STRAIGHT TYPE HIGH PROFILE
SCALE: 1 : 1    SIZE: A3		DRAWING NO. 192-XXXXXXXXX    REV C		
FILE NO. _____    SHEET 2 OF 3				

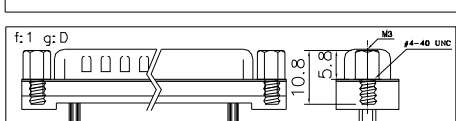
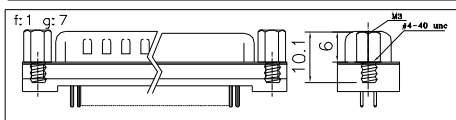
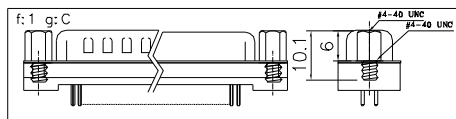
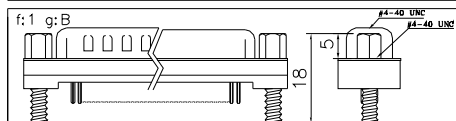
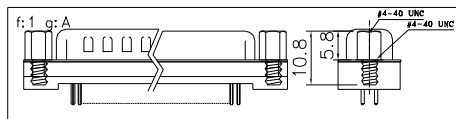
THE INFORMATION CONTAINED IN THIS DOCUMENT IS PROPRIETARY TO Y-S ELECTRONIC. ANY REPRODUCTION IN PART OR WHOLE WITHOUT PRIOR WRITTEN APPROVAL OR AUTHORIZATION OF Y-S ELECTRONIC IS STRICTLY PROHIBITED.

RoHS COMPLIANT

REVISIONS				
REV	ECN NO.	DESCRIPTION	APPROVED BY	DATE



CONSULT SALES OR  
FACTORY FOR OTHER  
MOUNTING STYLE OPTIONS



DO NOT SCALE DRAWING

DIMENSIONS:  
 MM [INCH]    INCH [mm]    MM ONLY

UNLESS OTHERWISE SPECIFIED,  
GENERAL TOLERANCE:  
 DECIMALS      ANGLES  
 X: ±0.38 [0.015]   X° ±3°  
 .X ±0.25 [0.010]   .X° ±1.0°  
 .XX ±0.13 [0.005]

MATERIAL

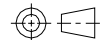
FINISH

CAD GENERATED DRAWING,  
DO NOT MANUALLY UPDATE  
 DRAWN BY AND DATE  
 JUSTIN XING 05-26-06

CHECKED BY AND DATE  
 JUSTIN XING 05-26-06

APPROVED BY AND DATE  
 KING CHIU 05-26-06

THIRD ANGLE PROJECTION



SCALE: 1:1      SIZE: A3



**Y-S ELECTRONIC CO., LTD.**  
 No. 101, Sec. 1, Long-An Street,  
 Lu-Chu, Taoyuan, Taiwan, R.O.C.  
 TEL: +886-3-3609819 FAX: +886-3-3609817

TITLE  
 192 SERIES  
 D-SUB DIP STRAIGHT TYPE  
 HIGH PROFILE

DRAWING NO. 192-XXXXXXXXX      REV A

FILE NO.      SHEET 3 OF 3