

THE INFORMATION CONTAINED IN THIS DOCUMENT IS PROPRIETARY TO Y-S ELECTRONIC, ANY REPRODUCTION IN PART OR WHOLE WITHOUT PRIOR WRITTEN APPROVAL OR AUTHORIZATION OF Y-S ELECTRONIC IS STRICTLY PROHIBITED.

RoHS COMPLIANT

REVISIONS				
REV	ECN NO.	DESCRIPTION	APPROVED BY	DATE

MATERIALS:

- A.COVER: PE+2L
- B.SHELL: ABS
- C.METAL SHIELD: BRASS NICKEL PLATED
- D.HOUSING: PA6T
- E.CONTACT: BRASS SILVER PLATED

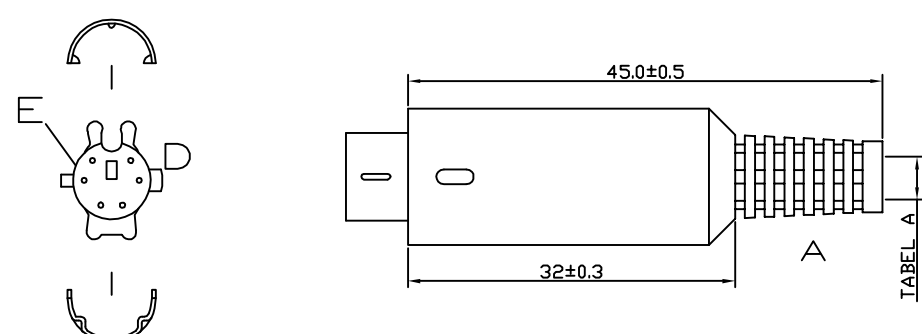
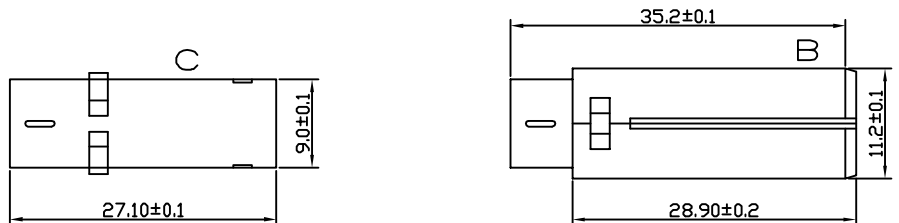
SPECIFICATIONS:

- 1.RATING:100V AC AT 1A
- 2.INSULATION RESISTANCE:
50M OHM MIN AT 500V DC
- 3.DIELECTRIC STRENGTH:
500V AC/ONE MINUTE

Ordering Information

189e - $\frac{X}{a} \frac{X}{b} \frac{X}{c} \frac{X}{d}$

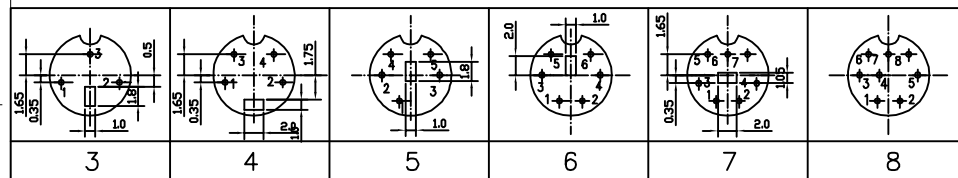
- a. Contact Type
3: 3P 6: 6P 9: 9P
4: 4P 7: 7P
5: 5P 8: 8P
- b. GENDER
1: MALE
2: FEMALE
- c. Contact Plating
0: Silver
- d. Insulator Color
1: White
2: Black
3: Green
4: Purple
5: Yellow




MINI DIN CONNECTOR MALE ASSEMBLY TYPE

TABLE A	Y-S Part Number
∅7.0 BACK SHELL	189e-X10X-03
∅6.0 BACK SHELL	189e-X10X-02
<input checked="" type="checkbox"/> ∅5.0 BACK SHELL(STANDARD)	189e-X10X-01

DO NOT SCALE DRAWING



DIMENSIONS: <input type="checkbox"/> MM [INCH] <input type="checkbox"/> INCH [mm] <input checked="" type="checkbox"/> MM ONLY	CAD GENERATED DRAWING, DO NOT MANUALLY UPDATE DRAWN BY AND DATE JAY ZHANG 04-12-08	 Y-S ELECTRONIC CO., LTD. No. 101, Sec. 1, Long-An Street, Lu-Chu, Taoyuan, Taiwan, R.O.C. TEL: +886-3-3609819 FAX: +886-3-3609817	
	UNLESS OTHERWISE SPECIFIED, GENERAL TOLERANCE: DECIMALS ANGLES X: ±0.38 [0.015] X°: ±3° .X: ±0.25 [0.010] .X°: ±1.0° .XX: ±0.13 [0.005]		CHECKED BY AND DATE JUSTIN XING 04-12-08 APPROVED BY AND DATE MICHAEL HUANG 04-12-08 THIRD ANGLE PROJECTION
MATERIAL FINISH	SCALE: NONE SIZE: A3	DRAWING NO. 189e-X1XX	REV A
FILE NO.:		SHEET 1 OF 1	

THE INFORMATION CONTAINED IN THIS DOCUMENT IS PROPRIETARY TO Y-S ELECTRONIC. ANY REPRODUCTION IN PART OR WHOLE WITHOUT PRIOR WRITTEN APPROVAL OR AUTHORIZATION OF Y-S ELECTRONIC IS STRICTLY PROHIBITED.

RoHS COMPLIANT

REVISIONS				
REV	ECN NO.	DESCRIPTION	APPROVED BY	DATE

MATERIALS:

- A. BOOT: PE + 2L
- B. MIDDLE HOOD: PA-757/ PS-475
- C. METAL SHELL: COPPER NICKEL PLATED
- D. INSULATOR: NYLON 6 + G.F.
- E. PIN CONTACT: BRASS SILVER PLATED

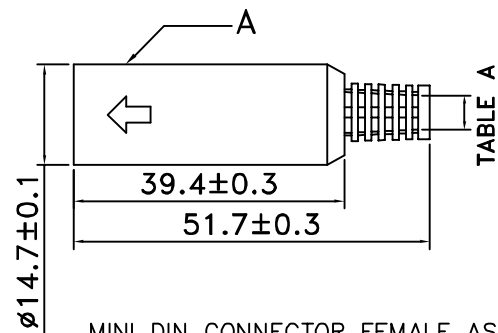
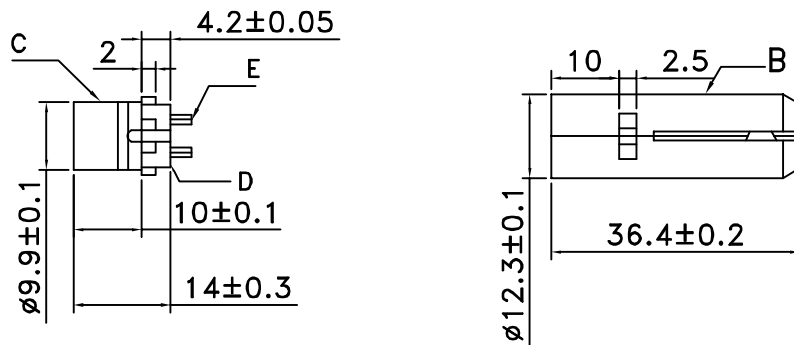
SPECIFICATIONS:

1. RATION: 100V AC 1A MAX
2. INSULATION RESISTANCE: 50M OHM MIN at 250V DC.
3. DIELECTRIC STRENGTH: 250 V AC / 1 MINUTE.
4. CONTACT RESISTANCE: 30M OHM MAX. 12V DC 2A MAX.
5. INSERTION FORCE: 4.5KG MAX.
6. WITHDRAWAL FORCE: 0.9KG ~ 3KG.
7. OPERATING TEMPERATURE: -20°C ~ 105°C

Ordering Information

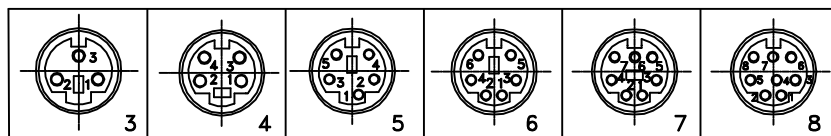
189e - $\frac{x}{a} \frac{x}{b} \frac{x}{c} \frac{x}{d}$


- a. Contact Type
 - 3: 3P 6: 6P 9: 9P
 - 4: 4P 7: 7P
 - 5: 5P 8: 8P
- b. GENDER
 - 1: MALE
 - 2: FEMALE
- c. Contact Plating
 - 0: Silver
- d. Insulator Color
 - 1: White
 - 2: Black
 - 3: Green
 - 4: Purple
 - 5: Yellow



MINI DIN CONNECTOR FEMALE ASSEMBLY TYPE

	TABLE A	Y-S Part Number
	ø7.0 BACK SHELL	189e-X20X-03
	ø6.0 BACK SHELL	189e-X20X-02
<input checked="" type="checkbox"/>	ø5.0 BACK SHELL(STANDARD)	189e-X20X-01



DIMENSIONS: <input type="checkbox"/> MM [INCH] <input type="checkbox"/> INCH [mm] <input checked="" type="checkbox"/> MM ONLY	CAD GENERATED DRAWING, DO NOT MANUALLY UPDATE DRAWN BY AND DATE JUSTIN XING 04-12-08	 Y-S ELECTRONIC CO., LTD. No. 101, Sec. 1, Long-An Street, Lu-Chu, Taoyuan, Taiwan, R.O.C. TEL: +886-3-3609819 FAX: +886-3-3609817	
	UNLESS OTHERWISE SPECIFIED, GENERAL TOLERANCE: DECIMALS ANGLES X: ±0.38 [0.015] X° ±3° .X ±0.25 [0.010] .X° ±1.0° .XX ±0.13 [0.005]		CHECKED BY AND DATE JUSTIN XING 04-12-08 APPROVED BY AND DATE MICHAEL HUANG 04-12-08 THIRD ANGLE PROJECTION
MATERIAL: _____ FINISH: _____	SCALE: NONE SIZE: A3	DRAWING NO. 189e-X2XX	REV A
FILE NO.: _____		SHEET 1 OF 1	

DO NOT SCALE DRAWING