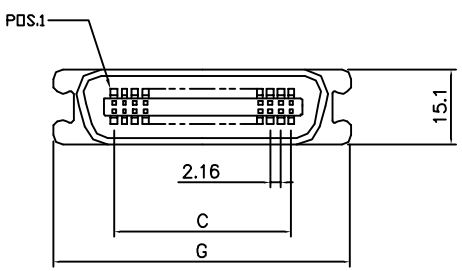
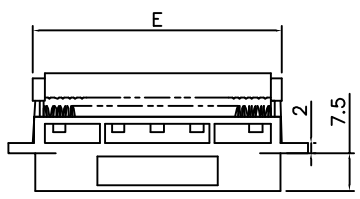


THE INFORMATION CONTAINED IN THIS DOCUMENT IS PROPRIETARY TO Y-S ELECTRONIC. ANY REPRODUCTION IN PART OR WHOLE WITHOUT PRIOR WRITTEN APPROVAL OR AUTHORIZATION OF Y-S ELECTRONIC IS STRICTLY PROHIBITED.

REVISIONS				
REV	ECN NO.	DESCRIPTION	APPROVED BY	DATE
C	△ C	A0605137 recension mounting types	ELTON MENG	2006-05-11

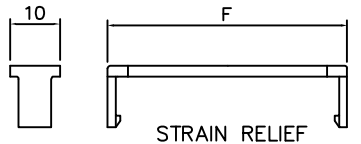
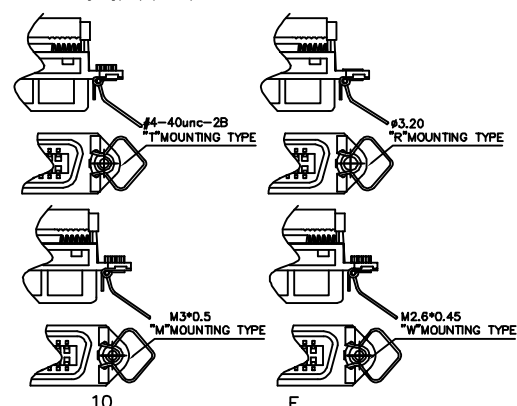


All Plastic (Male)

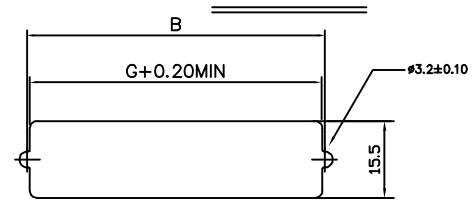
Dimensions Positions

	B±0.13	C±0.13	D±0.20	E±0.25	F±0.25	G±0.25
24	46.78	23.76	45.95	35.50	37.50	48.60
36	59.74	36.72	58.65	51.50	53.75	61.60
50	74.85	51.84	74.25	68.50	70.90	76.70

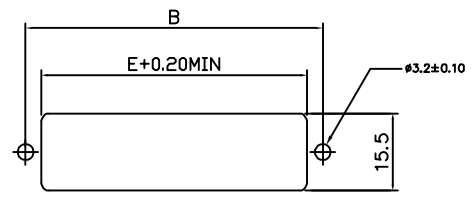
Mounting Type(Optional)



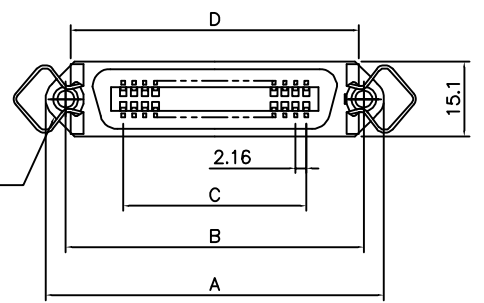
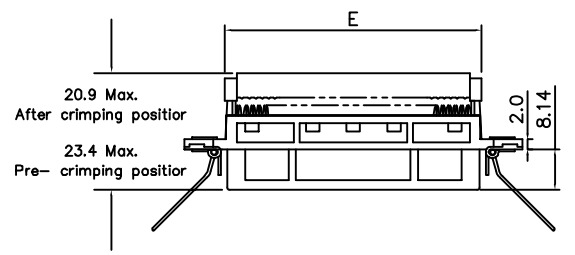
STRAIN RELIEF



RECOMMEND REAR MOUNT PANEL



RECOMMEND FRONT MOUNT PANEL



All Plastic (Female)

Dimensions Positions

	A±0.25	B±0.13	C±0.13	D±0.20	E±0.25	F±0.25	G±0.25
24	54.70	46.78	23.76	45.68	35.50	37.50	45.88
36	67.80	59.75	36.72	58.65	51.50	58.80	58.85
50	82.80	74.85	51.84	73.75	68.50	70.90	73.95

DO NOT SCALE DRAWING

DIMENSIONS: <input type="checkbox"/> MM [INCH] <input type="checkbox"/> INCH [mm] <input checked="" type="checkbox"/> MM ONLY	CAD GENERATED DRAWING, DO NOT MANUALLY UPDATE		Y-S ELECTRONIC CO., LTD. No. 101, Sec. 1, Long-An Street, Lu-Chu, Taoyuan, Taiwan, R.O.C. TEL: +886-3-3609819 FAX: +886-3-3609817
	UNLESS OTHERWISE SPECIFIED, GENERAL TOLERANCE: DECIMALS ANGLES X: ±0.38 [0.015] X°: ±3° .X: ±0.25 [0.010] .X°: ±10° .XX: ±0.13 [0.005]		
MATERIAL	APPROVED BY AND DATE KING CHIU 07-03-06		TITLE 143 SERIES CENTRONIC CONNECTORS I.D.C. TYPE
FINISH	THIRD ANGLE PROJECTION 		
SCALE: 1:1 SIZE: A3		DRAWING NO. 143-XXXXXX1X	REV C
		FILE NO.:	SHEET 2 OF 2

THE INFORMATION CONTAINED IN THIS DOCUMENT IS PROPRIETARY TO Y-S ELECTRONIC, ANY REPRODUCTION IN PART OR WHOLE WITHOUT PRIOR WRITTEN APPROVAL OR AUTHORIZATION OF Y-S ELECTRONIC IS STRICTLY PROHIBITED.

RoHS COMPLIANT

REVISIONS				
REV	ECN NO.	DESCRIPTION	APPROVED BY	DATE
C	△ C	A0605137 recension mounting types	ELTON MENG	2006-05-11

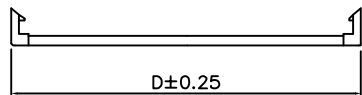
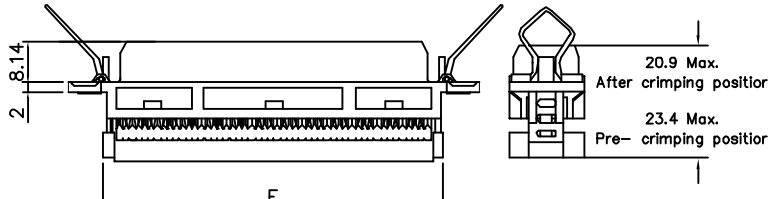
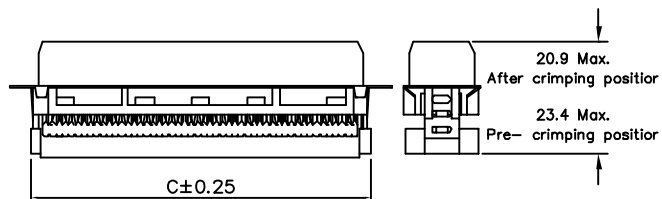
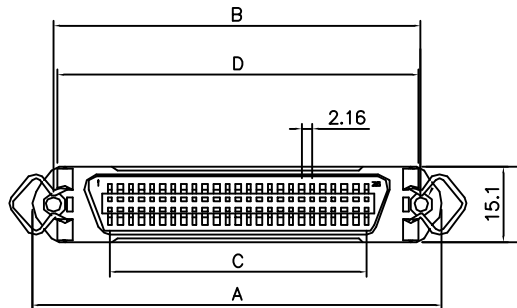
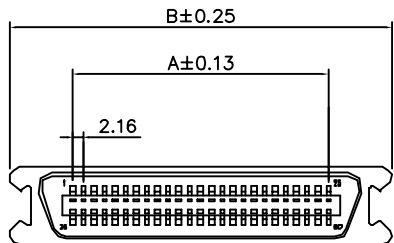
Product Specification

Material

Insulator :Glass-Filled Thermoplastic PBT,UL94V-0 rated
 Contact :Brass
 Shell :Steel, 100u" Tin Over 50u" min Nickel.

Electrical

Contact Resistance :20 milliohms
 Max at 1 AMP DC.
 Insulation Resistance :1000
 magohms at 500 VDC
 Dielectric Withstanding Voltage :
 1000 VAC/rms 60Hz for 1 minute
 Current Rating :3 AMP
 Volatge Rating :250 VAC/rms 60Hz



Metal shell (Male)

Metal shell (Female)

Dimensions Positions

	A	B	C	D
24	23.76	48.6	35.5	37.5
36	36.72	61.6	53.3	54.4
50	51.84	76.7	68.5	70.5

Dimensions Positions

	A±0.25	B±0.13	C±0.13	D±0.25	E±0.25
24	54.70	46.78	23.76	45.95	35.50
36	67.80	59.74	36.72	58.80	53.30
50	82.80	74.85	51.84	74.25	68.50

Ordering Information

143 - $\frac{XX}{a} \frac{X}{b} \frac{X}{c} \frac{X}{d} \frac{X}{e} \frac{X}{f} \frac{X}{g}$

- a. No. of Pins
 - 24: 24 positions
 - 36: 36 positions
 - 50: 50 positions
- b. Contact Type
 - 1: Male
 - 2: Female
- c. Contact Plating
 - 0: Gold flash selective gold
 - 1: 5u" selective gold on contact
 - 2: 10u" selective gold on contact
 - 3: 15u" selective gold on contact
 - 4: 30u" selective gold on contact
 - 5: 50u" selective gold on contact
- d. Insulator Color
 - 1: Blue
 - 2: Black
- e. Option On Strain Relief
 - 0: With strain relief
 - 1: Without strain relief
- f. Option
 - 0: Metal shell
 - 1: All plastic
- g. Mounting types
 - 0: With #3.20 rivet through holes
 - 1: With #4-40unc threaded insert
 - 2: With M3 threaded holes
 - 3: With M2.6 threaded holes

DO NOT SCALE DRAWING

DIMENSIONS: <input type="checkbox"/> MM [INCH] <input type="checkbox"/> INCH [mm] <input checked="" type="checkbox"/> MM ONLY	CAD GENERATED DRAWING, DO NOT MANUALLY UPDATE DRAWN BY AND DATE JUSTIN XING 07-03-06
UNLESS OTHERWISE SPECIFIED, GENERAL TOLERANCE: DECIMALS .X ±0.38 [0.015] .X ±0.25 [0.010] .XX ±0.13 [0.005]	CHECKED BY AND DATE JUSTIN XING 07-03-06 APPROVED BY AND DATE KING CHIU 07-03-06 THIRD ANGLE PROJECTION
MATERIAL FINISH	SCALE: 1 : 1 SIZE: A3



Y-S ELECTRONIC CO., LTD.
 No. 101, Sec. 1, Long-An Street,
 Lu-Chu, Taoyuan, Taiwan, R.O.C.
 TEL: +886-3-3609819 FAX: +886-3-3609817

TITLE 143 SERIES CENTRONIC CONNECTORS I.D.C. TYPE	
DRAWING NO. 143-XXXXXX0X	REV C
FILE NO.	SHEET 1 OF 2