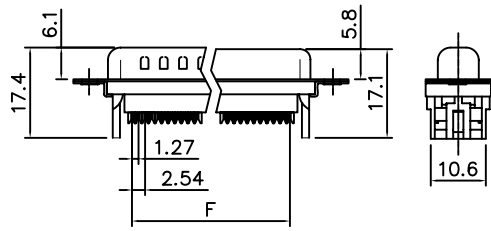
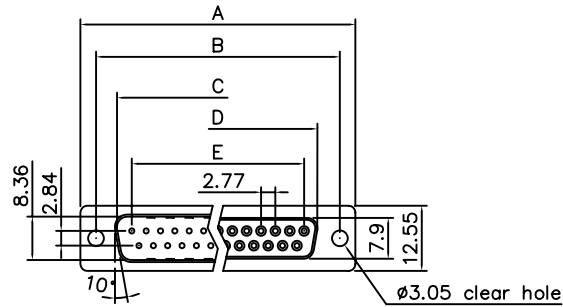


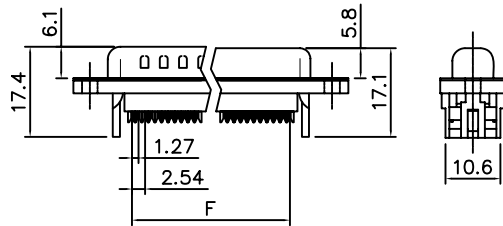
THE INFORMATION CONTAINED IN THIS DOCUMENT IS PROPRIETARY TO Y-S ELECTRONIC, ANY REPRODUCTION IN PART OR WHOLE WITHOUT PRIOR WRITTEN APPROVAL OR AUTHORIZATION OF Y-S ELECTRONIC IS STRICTLY PROHIBITED.

RoHS COMPLIANT

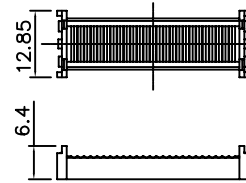
REVISIONS				
REV	ECN NO.	DESCRIPTION	APPROVED BY	DATE
A				
B				



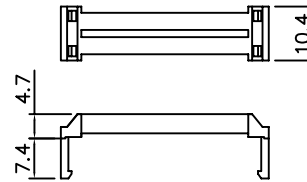
Without Insulator Support



With Insulator Support



Cover



Strain Relief

Product Specification

Material

Insulator : Glass-Filled Thermoplastic PBT, UL94V-0
 Contact : Brass
 Shell : Steel, 100u" Tin Over 50u" min Copper
 Clinch Nut : Brass, Nickel Plated
 Screwlock : Steel, Nickel Plated

Electrical

Contact Resistance : 20 milliohms
 Max at 1 AMP DC.
 Insulation Resistance : 1000
 megohms at 500 VDC
 Dielectric Withstanding Voltage :
 1000 VAC/rms 60Hz for 1 minute
 Current Rating : 3 AMP
 Volatge Rating : 250 VAC/rms 60Hz

Dimensions

Positions	A	B	C	D	E	F
9	30.81	24.99	16.92	16.33	11.08	10.16
15	39.20	33.30	25.25	24.70	19.39	17.78
25	53.05	47.04	38.96	38.40	33.24	30.48
37	69.40	63.50	55.42	54.84	49.86	45.72

DIMENSIONS:

MM [INCH] INCH [mm] MM ONLY

UNLESS OTHERWISE SPECIFIED, GENERAL TOLERANCE:

DECIMALS ANGLES
 .X ±0.38 [0.015] X° ±3°
 .XX ±0.25 [0.010] .X° ±1.0°
 .XX ±0.13 [0.005]

MATERIAL

FINISH

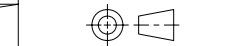
CAD GENERATED DRAWING, DO NOT MANUALLY UPDATE

DRAWN BY AND DATE
 SUE ZHANG 10-20-05

CHECKED BY AND DATE
 JUSTIN XING 10-20-05

APPROVED BY AND DATE
 KING CHIU 10-20-05

THIRD ANGLE PROJECTION



SCALE: 1 : 1 SIZE: A3



TITLE
 103 SERIES
 D-SUB IDC TYPE

DRAWING NO. 103-XXXXXXXXX REV B

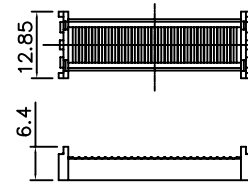
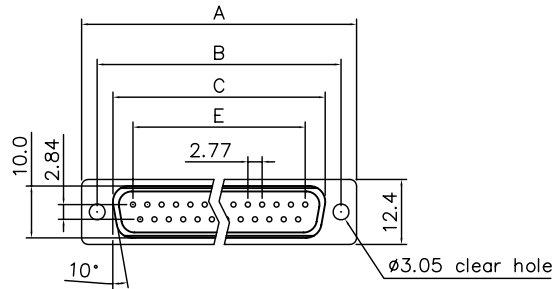
FILE NO. SHEET 1 OF 5

DO NOT SCALE DRAWING

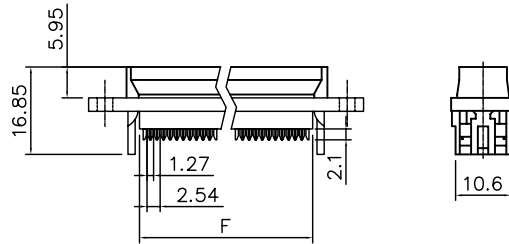
THE INFORMATION CONTAINED IN THIS DOCUMENT IS PROPRIETARY TO Y-S ELECTRONIC, ANY REPRODUCTION IN PART OR WHOLE WITHOUT PRIOR WRITTEN APPROVAL OR AUTHORIZATION OF Y-S ELECTRONIC IS STRICTLY PROHIBITED.

RoHS COMPLIANT

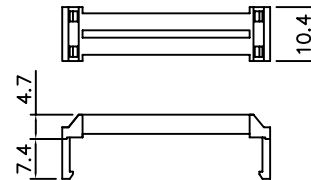
REVISIONS				
REV	ECN NO.	DESCRIPTION	APPROVED BY	DATE
A		△	KING CHIU	2006-09-15
B				



Cover



With Insulator Support



Strain Relief

Product Specification

Material

Insulator : Glass-Filled Thermoplastic PBT, UL94V-0
Contact : Copper alloy

Electrical

Contact Resistance : 20 milliohms
Max at 1 AMP DC.

Insulation Resistance : 1000
megohms at 500 VDC

Dielectric Withstanding Voltage :
1000 VAC/rms 60Hz for 1 minute

Current Rating : 3 AMP

Volatge Rating : 250 VAC/rms 60Hz

Dimensions

Positions	A	B	C	E	F
9	30.50	25.00	18.05	11.08	13.10
15	39.00	33.32	26.35	19.39	20.70
25	53.08	47.04	40.95	33.24	33.68
37	69.25	63.50	56.75	49.86	50.30

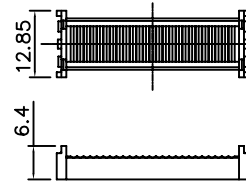
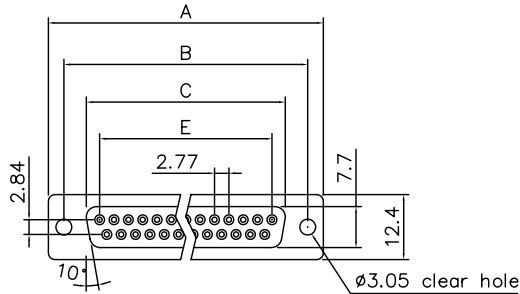
DO NOT SCALE DRAWING

DIMENSIONS: <input type="checkbox"/> MM [INCH] <input type="checkbox"/> INCH [MM] <input checked="" type="checkbox"/> MM ONLY		CAD GENERATED DRAWING, DO NOT MANUALLY UPDATE			
UNLESS OTHERWISE SPECIFIED, GENERAL TOLERANCE: DECIMALS ANGLES X: ±0.38 [0.015] X° ±3° .X ±0.25 [0.010] .X° ±1.0° .XX ±0.13 [0.005]		DRAWN BY AND DATE JUSTIN XING 05-29-06			
MATERIAL		CHECKED BY AND DATE JUSTIN XING 05-29-06		APPROVED BY AND DATE KING CHIU 05-29-06	
FINISH		THIRD ANGLE PROJECTION		DRAWING NO. 103-XX1X0X011	
		SCALE: 1 : 1		SIZE: A3	
		FILE NO.:		REV B	
		SHEET 2 OF 5			

THE INFORMATION CONTAINED IN THIS DOCUMENT IS PROPRIETARY TO Y-S ELECTRONIC, ANY REPRODUCTION IN PART OR WHOLE WITHOUT PRIOR WRITTEN APPROVAL OR AUTHORIZATION OF Y-S ELECTRONIC IS STRICTLY PROHIBITED.

RoHS COMPLIANT

REVISIONS				
REV	ECN NO.	DESCRIPTION	APPROVED BY	DATE
A		△	KING CHIU	2006-12-14
B				



Cover

Product Specification

Material

Insulator : Glass-Filled Thermoplastic PBT, UL94V-0
Contact : Copper alloy

Electrical

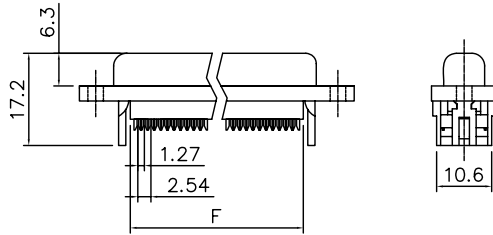
Contact Resistance : 20 milliohms
Max at 1 AMP DC.

Insulation Resistance : 1000
megohms at 500 VDC

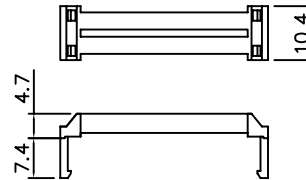
Dielectric Withstanding Voltage :
1000 VAC/rms 60Hz for 1 minute

Current Rating : 3 AMP

Volatge Rating : 250 VAC/rms 60Hz



With Insulator Support



Strain Relief

Dimensions

Positions	A	B	C	E	F
9	30.50	24.99	16.00	11.08	13.10
15	39.00	33.30	24.27	19.39	20.70
25	53.05	47.04	38.22	33.24	33.68
37	69.40	63.50	53.50	49.86	50.30

DIMENSIONS: <input type="checkbox"/> MM [INCH] <input type="checkbox"/> INCH [MM] <input checked="" type="checkbox"/> MM ONLY		CAD GENERATED DRAWING, DO NOT MANUALLY UPDATE			
UNLESS OTHERWISE SPECIFIED, GENERAL TOLERANCE: DECIMALS ANGLES .X ±0.38 [0.015] X° ±3° .X ±0.25 [0.010] .X° ±1.0° .XX ±0.13 [0.005]		DRAWN BY AND DATE JUSTIN XING 05-29-06			
MATERIAL		CHECKED BY AND DATE JUSTIN XING 05-29-06		APPROVED BY AND DATE KING CHIU 05-29-06	
FINISH		THIRD ANGLE PROJECTION		DRAWING NO. 103-XX2X0X011	
		SCALE: 1 : 1		SIZE: A3	
				FILE NO.:	
				SHEET 3 OF 5	

DO NOT SCALE DRAWING

1 2 3 4 5 6 7 8

THE INFORMATION CONTAINED IN THIS DOCUMENT IS PROPRIETARY TO Y-S ELECTRONIC, ANY REPRODUCTION IN PART OR WHOLE WITHOUT PRIOR WRITTEN APPROVAL OR AUTHORIZATION OF Y-S ELECTRONIC IS STRICTLY PROHIBITED.

RoHS COMPLIANT

REVISIONS				
REV	ECN NO.	DESCRIPTION	APPROVED BY	DATE

Ordering Information

103 - $\frac{XX}{a} \frac{X}{b} \frac{X}{c} \frac{X}{d} \frac{X}{e} \frac{X}{f} \frac{X}{g} \frac{X}{h}$

a. No. Of Pins

- 09: 09 positions
- 15: 15 positions
- 25: 25 positions
- 37: 37 positions
- 50: 50 positions

b. Contact Type:

- 1: Male 3: Male (phosphor bronze)
- 2: Female 4: Female (phosphor bronze)

c. Contact Plating :

- 0. Gold flash selective gold(standard)
- 1. 5u"selective gold on contact
- 2. 10u"selective gold on contact
- 3. 15u"selective gold on contact
- 4. 30u"selective gold on contact
- 5. 50u"selective gold on contact
- 6. Gold flash full gold
- 7. Gold flash selective gold(Phosphor Bronze)
- 8. Matte tin
- 9. 15u"selective gold on contact(Phosphor Bronze)
- A. 2.5 μ inch min gold over 12 μ inch Pd-Ni
- B. 2.5 μ inch min gold over 28 μ inch Pd-Ni
- C. 5u" GOLD(for HARTING電鍍測點變更)
- D. 鍍2.5u"金, 28u"靶鍍(for HARTING電鍍測點變更)

d. Shell plating :

- 0. All plastic
- 1. Nickel(standard)
- 2. Tin
- 3. Cr⁺⁶yellow chrome
- 4. Gold flash
- 5. Tin, dimple
- 6. Cr⁺⁶yellow chrome, dimple
- 7. Tin tab shell dimple
- 8. Special tin, dimple
- 9. Cr⁺³yellow chrome
- A. Cr⁺³yellow chrome, dimple
- B. Matte tin
- C. All plastic(With UL logo)
- D. Special Ni, dimple

e. Insulator Color :

- 1: Blue 7. Pc99 green
- 2: Black(standard) 8. Pc99 yellow
- 3: White 9. Black(Halogen-free)
- 4: Gray
- 5: Green
- 6. Pc99 blue

f. Flange Mounting Option :

- 0: \varnothing 3.05mm clear hole
- 1: #4-40 unc Threaded Hole
- 2: M2.6 Threaded Hole
- 3: M3 Threaded Hole
- 4: #4-40 unc Threaded Hole: 4mm
- 5: #4-40 unc Threaded Hole, with #4-40 unc(5.8*10.8mm)screwlock installed
- 6: #4-40 unc Threaded Hole, with M3(5.8*10.8mm)screwlock installed
- 7: #4-40 unc Threaded Hole(2.5mm)
- 8: Back hex rivet, 5.9mm; M3
- 9: M2 Threaded Hole
- A: #4-40 unc Threaded Hole, with #4-40 unc(5.8*11.8mm)screwlock bulk-packed
- B: #4-40 unc Threaded Hole, with #4-40 unc(4.8*11.8mm)screwlock installed
- C: Front hex rivet, 5.9mm; #4-40 unc
- D: Front hex rivet, 5.9mm; M3
- E: Back hex rivet, 5.9mm; #4-40 unc
- F: Back hex rivet, 4.0mm; #4-40 unc, with #4-40 unc(5.0*10.0mm)screwlock installed
- G: #4-40 unc Threaded Hole, with #4-40 unc(4.8*11.8mm)screwlock bulk-packed
- H: #4-40 unc 夾片
- I: Back hex rivet, 4.0mm; #4-40 unc, with M3(5.0*10.0mm)screwlock installed
- J: Back hex rivet, 4.0mm; #4-40 unc, with M2.6(5.8*11.8mm)screwlock installed
- K: Back hex rivet, 4.0mm; M3, with M3(5.0*10.0mm)screwlock installed

g. Insulator support type:

- 1: with insulator support
- 2: w/o insulator support


h. SR type:

- 1: plastic strain relief
- 2: metal shell strain relief
- 3: without strain relief

i. Insulator type

- N: Economical type

DO NOT SCALE DRAWING

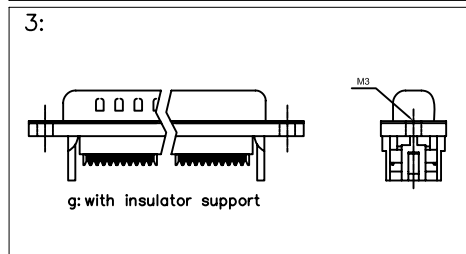
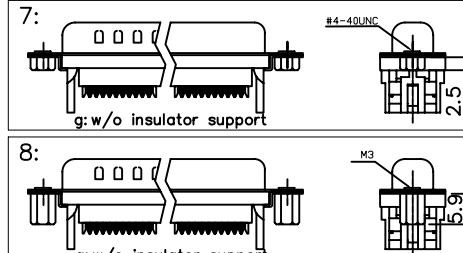
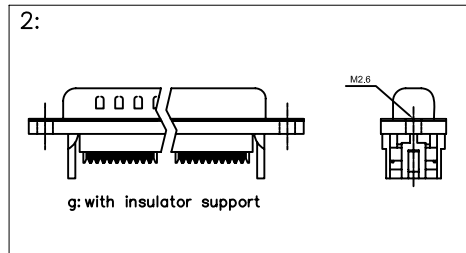
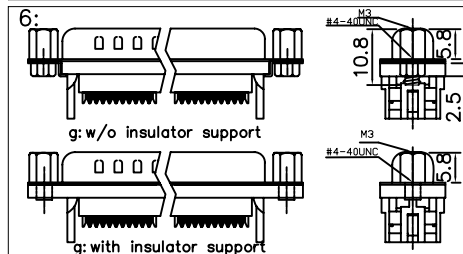
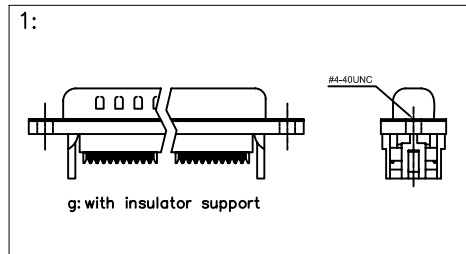
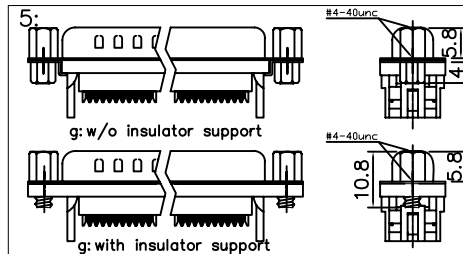
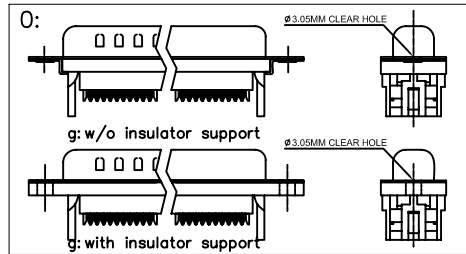
DIMENSIONS: <input type="checkbox"/> MM [INCH] <input type="checkbox"/> INCH [mm] <input checked="" type="checkbox"/> MM ONLY		CAD GENERATED DRAWING, DO NOT MANUALLY UPDATE		 Y-S ELECTRONIC CO., LTD.	
UNLESS OTHERWISE SPECIFIED, GENERAL TOLERANCE: DECIMALS ANGLES X. \pm 0.38 [0.015] X° \pm 3° .X \pm 0.25 [0.010] .X° \pm 1.0° .XX \pm 0.13 [0.005]		DRAWN BY AND DATE JUSTIN XING 07-20-06			
MATERIAL		CHECKED BY AND DATE JUSTIN XING 07-20-06		DRAWING NO. 103-XXXXXXXXXX	
FINISH		APPROVED BY AND DATE KING CHIU 07-20-06		REV D	
SCALE: 1:1		THIRD ANGLE PROJECTION		FILE NO. SHEET 1 OF 1	
SIZE: A3		DRAWING NO. 103-XXXXXXXXXX		SHEET 1 OF 1	

THE INFORMATION CONTAINED IN THIS DOCUMENT IS PROPRIETARY TO Y-S ELECTRONIC, ANY REPRODUCTION IN PART OR WHOLE WITHOUT PRIOR WRITTEN APPROVAL OR AUTHORIZATION OF Y-S ELECTRONIC IS STRICTLY PROHIBITED.

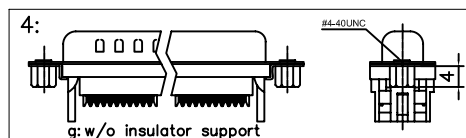
RoHS COMPLIANT

REVISIONS				
REV	ECN NO.	DESCRIPTION	APPROVED BY	DATE
A				

f: Flange Mounting Option:



CONSULT SALES OR FACTORY FOR OTHER MOUNTING STYLE OPTIONS



DO NOT SCALE DRAWING

DIMENSIONS: <input type="checkbox"/> MM [INCH] <input type="checkbox"/> INCH [MM] <input checked="" type="checkbox"/> MM ONLY		CAD GENERATED DRAWING, DO NOT MANUALLY UPDATE DRAWN BY AND DATE: SUE ZHANG 10-20-05 CHECKED BY AND DATE: JUSTIN XING 10-20-05 APPROVED BY AND DATE: KING CHIU 10-20-05 THIRD ANGLE PROJECTION			
UNLESS OTHERWISE SPECIFIED, GENERAL TOLERANCE: DECIMALS: X. ±0.38 [0.015] .X ±0.25 [0.010] .XX ±0.13 [0.005] ANGLES: X° ±3° .X° ±1.0°		TITLE: 103 SERIES D-SUB IDC TYPE		DRAWING NO.: 103-XXXXXXXXX REV: A	
MATERIAL: _____ FINISH: _____		SCALE: 1 : 1 SIZE: A3		FILE NO.: _____ SHEET 5 OF 5	